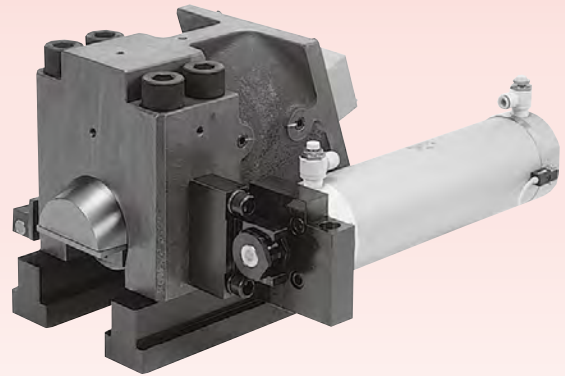


Hydraulic Clamp

T-Slot Automatic-Slide

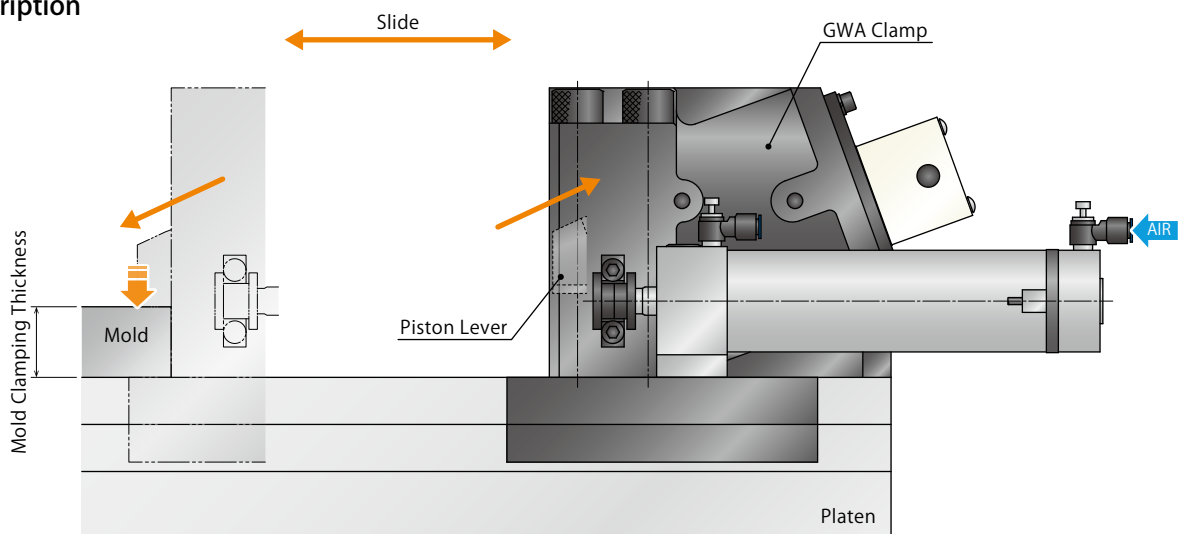
Model GLA



Automatic-Slide Model of GWA Clamp

Most suitable for inaccessible area or non-operation side.
Clamp movement is completely automated.

Action Description



Locked State

GLA clamp moves forward with the air supply to the air cylinder. The piston lever moves forward and clamps the mold with the pressure supply to the lock port. Clamp action can be confirmed by the limit switch inside the clamp.

Forward End Detection ON
Backward End Detection OFF

Released State

Release the locking pressure and supply the hydraulic pressure to the release port. The lever is retracted and set inside the clamp body. After that, the clamp is moved backward by the air cylinder.

Forward End Detection OFF
Backward End Detection ON

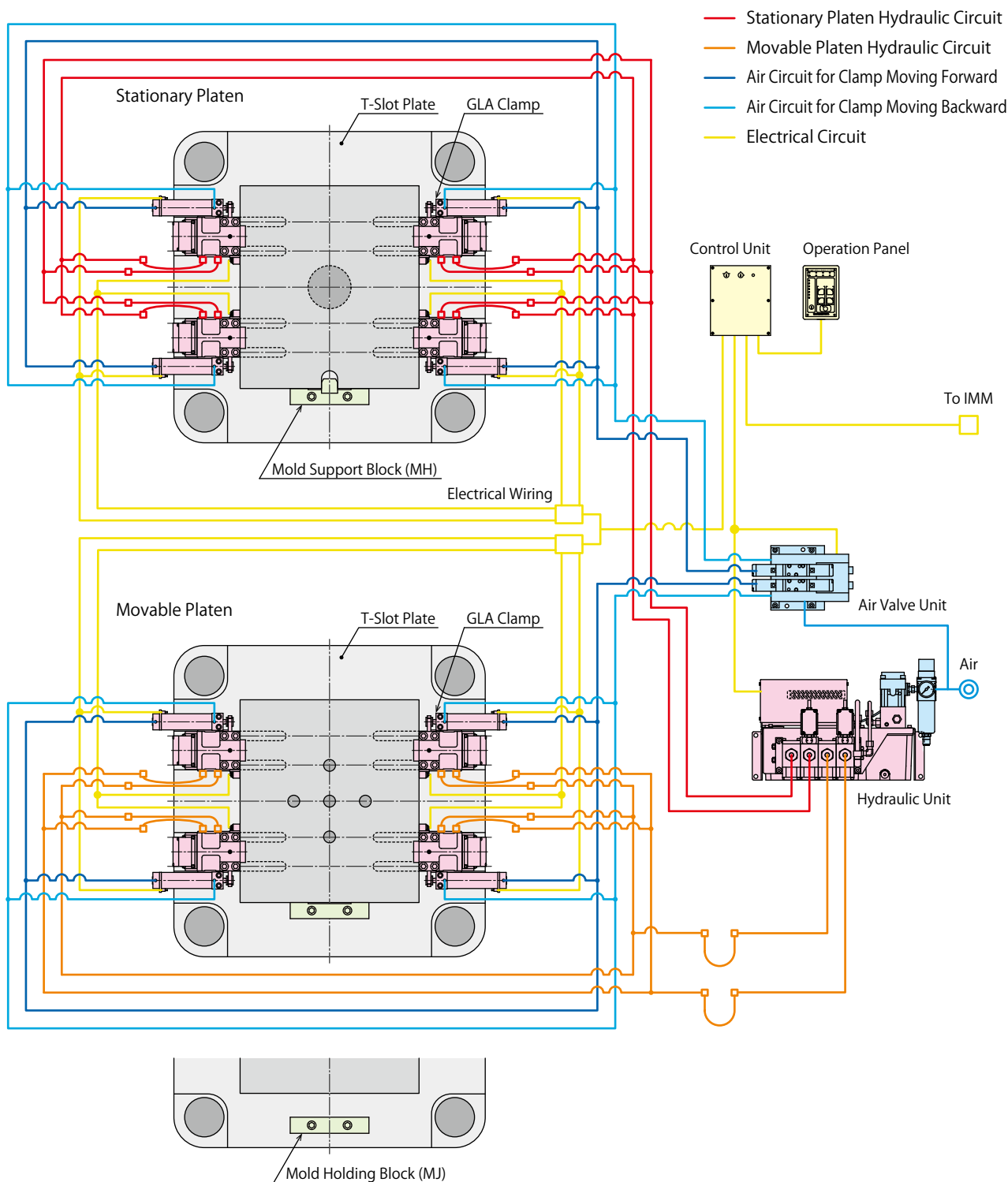
※ We provide GLA clamp according to the mold clamping thickness and T-slot dimension. Please refer to the external dimensions for detail.

● **System Structure Example**

The basic structure with GLA clamp that is slid automatically in the T-slot by the air cylinder.

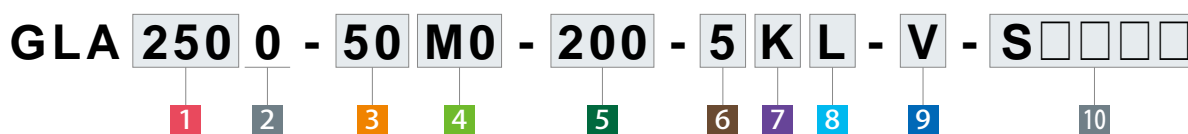
This system is able to control one stationary platen circuit and movable platen circuit with a two-circuit hydraulic unit.

- Hydraulic Clamp : GLA Clamp
- Hydraulic Unit : CP□□ Unit
- Air Valve Unit : MV30□2 Valve Unit





Model No. Indication



1 Clamping Force

- 160** : Clamping Force= 160kN
- 250** : Clamping Force= 250kN
- 400** : Clamping Force= 400kN
- 500** : Clamping Force= 500kN

6 Switch Load Voltage (Current)

- 1** : AC100V
- 2** : AC200V
- 5** : DC24V (5~40mA)

2 Design No.

- 0** : Revision Number

7 Electrical Rating

- Blank** : 3A Rating
- K** : For Extremely Small Load

3 Mold Clamping Thickness

- 40** : Mold Clamping Thickness h=40mm
- 50** : Mold Clamping Thickness h=50mm

8 Air Cylinder Mounting Position

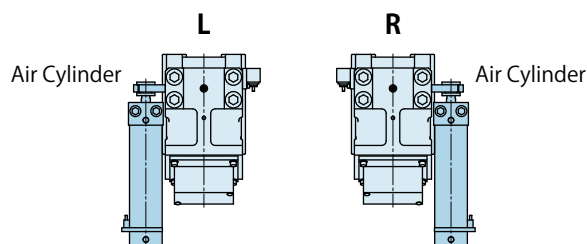
- L** : Left Side as Seen from Cylinder Back Side
- R** : Right Side as Seen from Cylinder Back Side

4 Wiring System

- M0** : Metallic Conduit ^{※1}
- M4** : Metallic Conduit ^{※1} (With 4m Cable) ^{※2}
- C1** : Conduit with ϕ 16mm Hole
- C2** : Conduit with ϕ 22mm Hole

Notes

- ※1. Use metallic conduit plug SCK-14 (Sanwa) for cable side.
- ※2. Cable end is composed of wires covered by a marker tube.



9 Option

- Blank** : Standard
- Q** : Double Cylinder
- V** : High Temperature (0~120°C)

5 Slide Stroke

※ Please select the slide stroke taking a margin into consideration.

- 075** : Slide Stroke 75mm
- 200** : Slide Stroke 200mm

10 Production Number

This number represents the main specification of the clamp's T-slot stem and the clamping height. After the specification is confirmed, we will create a number.

Specifications

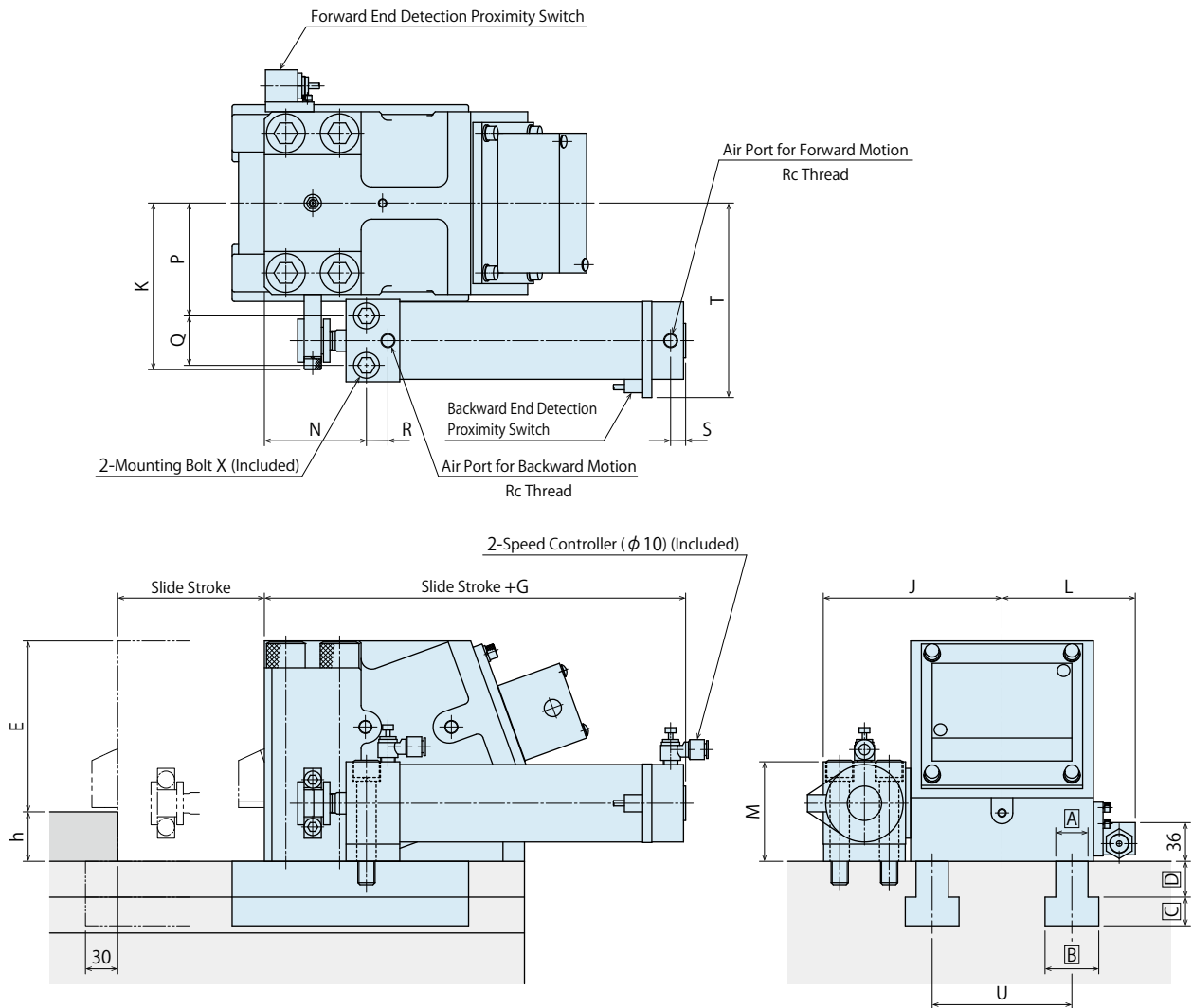
Model No.		GLA1600	GLA2500	GLA4000	GLA5000
GWA Clamp Model No.		GWA1600	GWA2500	GWA4000	GWA5000
Clamping Capacity	kN	160	250	400	500
Clamping Force (At 13.7MPa)	kN	160	250	400	400
Slide Stroke	mm	50~300			
Operating Air Pressure	MPa	0.39~0.49			
Operating Temperature ※3	°C	0~70 (High temperature option is available for 0~120°C)			
Use Frequency ※4		Less than 20 Cycles / Day			
Pressurizing Agent ※5 ※6 ※7		General Hydraulic Oil Equivalent to ISO-VG-32			
Min. T-Slot Width a (JIS) ※8	mm	28	32	42	42

Notes

- ※3. Option **V**: High Temperature (0~120°C) is for operating in temperatures of 70°C or more.
- ※4. Please contact us for more frequent use.
- ※5. Please contact us for fluids other than those mentioned on the list.
- ※6. If hydraulic viscosity is higher than specified, action time will be longer.
- ※7. If using it at low temperature, action time will be longer because the viscosity of hydraulic oil becomes higher.
- ※8. It shows reference dimensions. The dimension may differ from specification depending on T-slot (T-leg) dimension, dimension of clamp cylinder that sticks out of T-slot during lock action, or body material.
 1. Do not exceed the clamp's capacity.
 2. There is $\pm 10\%$ variation in holding force and clamping force.
 3. The accuracy of the mold clamping thickness (h dimension) should be within $\pm 0.5\text{mm}$.
 4. Please refer to GWA clamp pages (p. 43-48) for details of clamp body.

External Dimensions

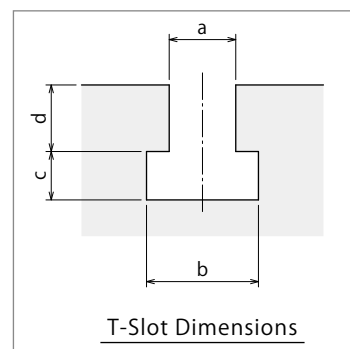
※ This drawing shows GLA1600~ GLA5000 standard model.
 Contact us for external dimensions for these options.
 Please refer to GWA clamp pages (p. 43-48) for details of clamp body.



Notes

1. Do not exceed the clamping force on the specification.
2. Specifications/Contents in this catalog are subject to change without prior notice. Ask for the approval drawing before deciding to purchase.

T-Slot Dimensions



External Dimensions

(mm)

Model No.	GLA1600	GLA2500	GLA4000	GLA5000	
GWA Clamp Model No.	GWA1600	GWA2500	GWA4000	GWA5000	
Extra Stroke	1.5	1.5	1.5	1.5	
E	128	155	195	195	
G	178	192	228.5	228.5	
J	139	166.5	273	273	
K	134	155.5	222.5	222.5	
L	108	124	146.5	146.5	
M	80.5	92.6	149	149	
N	85	95	100	100	
P	86	105	133	133	
Q	41	46	120	120	
R	16	20	37.5	37.5	
S	14	14	19	19	
T	152.5	181	260	260	
U	104	130	162	162	
X	Mounting Bolt	M12×1.75×85	M16×2×100	M20×2.5×160	M20×2.5×160
	Tap Machining	M12×1.75 Thread Depth 24	M16×2 Thread Depth 32	M20×2.5 Thread Depth 40	M20×2.5 Thread Depth 40
Rc	Rc1/4	Rc1/4	Rc1/2	Rc1/2	

Notes

1. When making an order, please indicate a, b, c, d dimension of T-slot and h dimensions of clamping mold thickness.
2. Please refer to GWA clamp pages (p. 43-48) for unlisted dimensions.

Sales Offices

Sales Offices across the World

Japan	TEL. +81-78-991-5162	FAX. +81-78-991-8787
Overseas Sales	KOSMEK LTD. 1-5, 2-chome, Murotani, Nishi-ku, Kobe-city, Hyogo, Japan 651-2241 〒651-2241 兵庫県神戸市西区室谷2丁目1番5号	
USA	TEL. +1-630-241-3465	FAX. +1-630-241-3834
KOSMEK (USA) LTD.	1441 Branding Avenue, Suite 110, Downers Grove, IL 60515 USA	
China	TEL.+86-21-54253000	FAX.+86-21-54253709
KOSMEK (CHINA) LTD. 考世美(上海)貿易有限公司	21/F, Orient International Technology Building, No.58, Xiangchen Rd, Pudong Shanghai 200122., P.R.China 中国上海市浦东新区向城路58号东方国际科技大厦21F室 200122	
Thailand	TEL. +66-2-715-3450	FAX. +66-2-715-3453
Thailand Representative Office	67 Soi 58, RAMA 9 Rd., Suanluang, Suanluang, Bangkok 10250, Thailand	
Taiwan (Taiwan Exclusive Distributor)	TEL. +886-2-82261860	FAX. +886-2-82261890
Full Life Trading Co., Ltd. 盈生貿易有限公司	16F-4, No.2, Jian Ba Rd., Zhonghe District, New Taipei City Taiwan 23511 台湾新北市中和區建八路2號 16F-4 (遠東世紀廣場)	
Philippines (Philippines Exclusive Distributor)	TEL.+63-2-310-7286	FAX. +63-2-310-7286
G.E.T. Inc, Phil.	Victoria Wave Special Economic Zone Mt. Apo Building, Brgy. 186, North Caloocan City, Metro Manila, Philippines 1427	
Europe (Europe Exclusive Distributor)	TEL. +43-463-287587-10	FAX. +43-463-287587-20
KOS-MECH GmbH	Schleppplatz 2 9020 Klagenfurt Austria	
Indonesia (Indonesia Exclusive Distributor)	TEL. +62-21-5818632	FAX. +62-21-5814857
P.T PANDU HYDRO PNEUMATICS	Ruko Green Garden Blok Z- II No.51 Rt.005 Rw.008 Kedoya Utara-Kebon Jeruk Jakarta Barat 11520 Indonesia	

Sales Offices in Japan

Head Office	TEL.078-991-5115	FA	 WAHLTEC [®] KNOWLEDGE TRUST SUCCESS
Osaka Sales Office	〒651-2241	兵庫県神戸市西区	
Overseas Sales			
Tokyo Sales Office	TEL.048-652-8839	FA	
	〒331-0815	埼玉県さいたま市	WAHLTEC GmbH Ravensburger Str. 14 88361 Altshausen T: +49 (7584) 9238883 F: +49 (7584) 9238887 www.wahltec.de
Nagoya Sales Office	TEL.0566-74-8778	FA	
	〒446-0076	愛知県安城市美園	
Fukuoka Sales Office	TEL.092-433-0424	FA	
	〒812-0006	福岡県福岡市博多	